

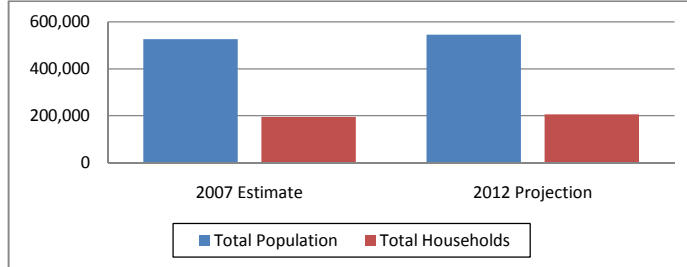


Scotland Manufacturing Building (30 mile radius)  
 19320 Airbase Road Wagram, NC 28396  
 Lat: 34.825948 Long:-79.361492  
 Wagram Pop: 3,113 Scotland County Pop: 37,601

## Regional Data Summary Report

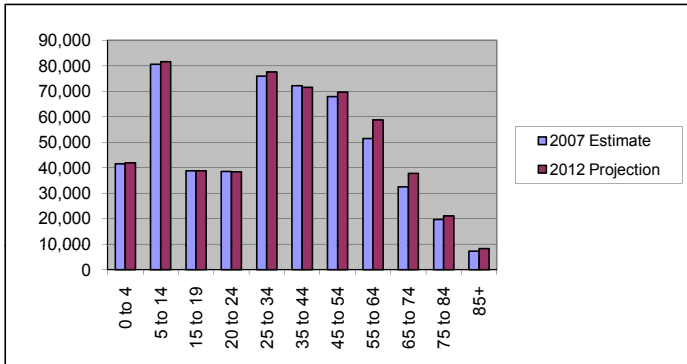
### Population & Households

	2007 Estimate	2012 Projection	Percent Change 2007 to 2012
Total Population	526,184	545,331	3.6%
Population Density (Pop/Sq Mi)	186.1	192.9	3.6%
Total Households	195,149	205,772	5.4%
<b>Population by Gender:</b>			
Male	259,548	269,205	3.7%
Female	266,636	276,126	3.6%



### Population by Age

	2007 Estimate	2012 Projection	Percent Change 2007 to 2012
0 to 4	41,568	41,937	0.9%
5 to 14	80,593	81,581	1.2%
15 to 19	38,768	38,765	0.0%
20 to 24	38,493	38,360	-0.3%
25 to 34	75,898	77,635	2.3%
35 to 44	72,159	71,571	-0.8%
45 to 54	67,853	69,655	2.7%
55 to 64	51,442	58,713	14.1%
65 to 74	32,485	37,840	16.5%
75 to 84	19,653	21,041	7.1%
85+	7,294	8,249	13.1%

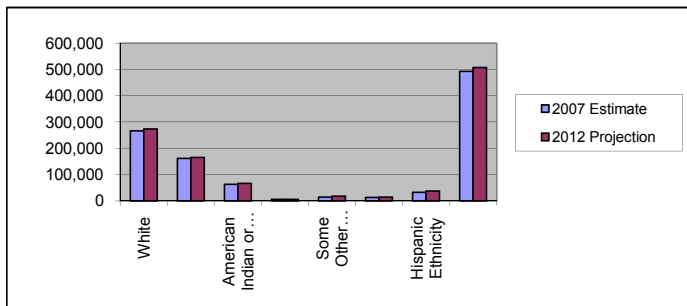


#### Median Age:

	2007 Estimate	2012 Projection	Percent Change 2007 to 2012
Total Population	33.3	34.3	2.7%

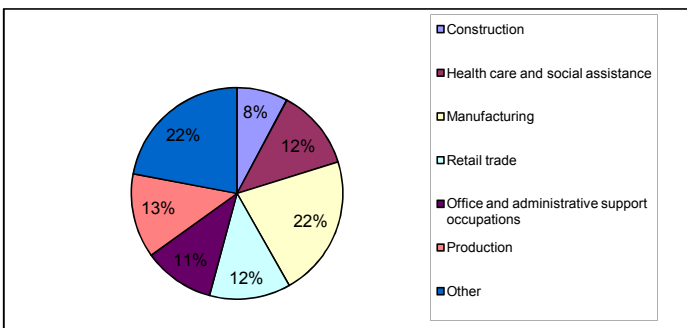
### Population by Race/Ethnicity

	2007 Estimate	2012 Projection	Percent Change 2007 to 2012
White	266,298	274,091	2.9%
Black	161,651	164,930	2.0%
American Indian or Alaska Native	63,351	66,785	5.4%
Asian or Pacific Islander	6,212	6,222	0.1%
Some Other Race	14,944	18,600	24.5%
Two or More Races	13,727	14,702	7.1%
Hispanic Ethnicity	32,916	38,323	16.4%
Not Hispanic or Latino	493,268	507,008	2.8%



### Employment by Industry

	2000 US Census
Construction	7.8%
Health care and social assistance	12.4%
Manufacturing	21.6%
Retail trade	12.4%
Office and administrative support occupations	10.9%
Production	12.9%
Other	22.0%





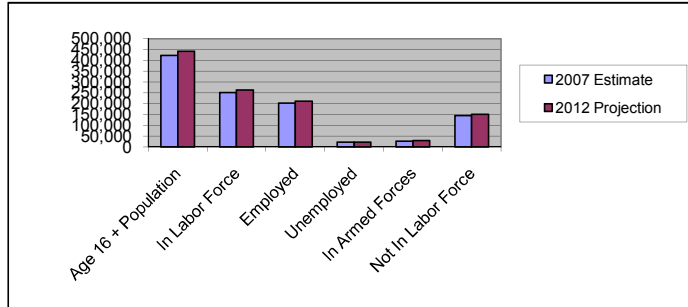
Scotland Manufacturing Building (30 mile radius)  
 19320 Airbase Road Wagram, NC 28396  
 Lat: 34.825948 Long:-79.361492  
 Wagram Pop: 3,113 Scotland County Pop: 37,601

## Regional Data Summary Report

### Labor Force

	2007 Estimate	2012 Projection	Percent Change 2007 to 2012
Age 16 + Population	423,292	442,953	4.6%
In Labor Force	251,886	262,757	4.3%
Employed	202,969	210,951	3.9%
Unemployed	21,777	22,797	4.7%
In Armed Forces	27,140	29,009	6.9%
Not In Labor Force	144,266	151,187	4.8%

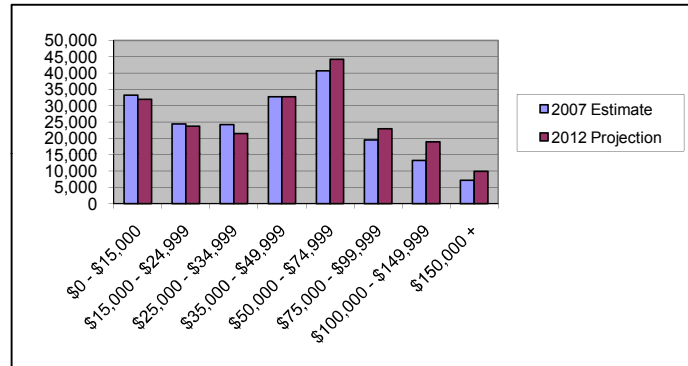
2007 Number of Employees (Daytime Population)	192,787
2007 Number of Employers	16,042



### Households by Income

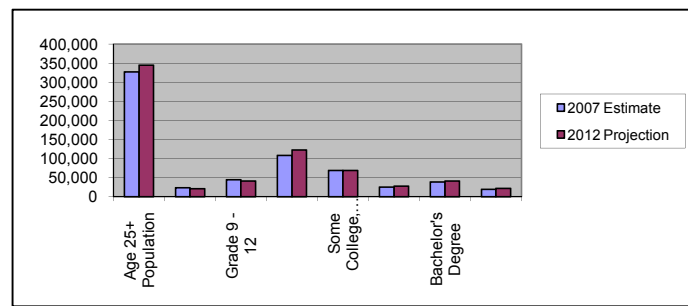
	2007 Estimate	2012 Projection	Percent Change 2007 to 2012
\$0 - \$15,000	33,260	31,915	-4.0%
\$15,000 - \$24,999	24,387	23,764	-2.6%
\$25,000 - \$34,999	24,241	21,436	-11.6%
\$35,000 - \$49,999	32,730	32,761	0.1%
\$50,000 - \$74,999	40,685	44,256	8.8%
\$75,000 - \$99,999	19,547	22,898	17.1%
\$100,000 - \$149,999	13,188	18,876	43.1%
\$150,000 +	7,110	9,867	38.8%

Average Hhld Income	\$47,465	\$49,484	4.3%
Median Hhld Income	\$41,979	\$46,823	11.5%
Per Capita Income	\$18,786	\$19,964	6.3%



### Level of Educational Attainment

	2007 Estimate	2012 Projection	Percent Change 2007 to 2012
Age 25+ Population	326,783	344,704	5.5%
Grade K - 8	23,311	21,079	-9.6%
Grade 9 - 12	44,045	41,436	-5.9%
High School Graduate	107,833	122,427	13.5%
Some College, No Degree	68,396	68,725	0.5%
Associates Degree	25,564	28,083	9.9%
Bachelor's Degree	38,217	41,394	8.3%
Graduate Degree	19,418	21,560	11.0%



Current year data is for the year 2007. 5 year projected data is for the year 2012. More About Our Data.  
 Demographic data © 2007 by Experian/Applied Geographic Solutions.

© 2007. DemographicsNow is brought to you by SRC, LLC.

SRC, DemographicsNow.com and the SRC and DemographicsNow.com logos are trademarks of SRC, LLC. All rights reserved.